

LD

SEMITRAILERS WITH LOWER LOADING FLOOR

LDR

2-AXLE
4-AXLE

3-AXLE
5-AXLE

LDF

2-AXLE
4-AXLE

3-AXLE
5-AXLE



LD SERIES

Semitrailers with lowered loading floor series LD are offered in options from 2 to 5 axles.

Depending on the requirements, the semitrailers are produced in different configurations: multiple lengthening, widening with any choice of axles: fixed, steering or hydraulically controlled steering, operated by a remote control, with maximum load up to 16 tonnes. The most popular semitrailers are equipped with 17.5 inch twin wheels. As an option: bottom loading floor 800

mm above the ground in driving position, low profile 205/65 tyres provide perfect parameters for special-purpose semitrailers for oversize cargo transport. If 800 mm is still too much, it is possible to make special cavities for wheels or for a bucket of a transported machine.

The top floor is also used for cargo transport. It can be used for the transport of additional semitrailer equipment, such as stripes and chains for securing a cargo and tools. It can also be used for the transport of smaller machines, loaded with a crane or optionally, entering thanks to a special ramp.

LDF 2-AXLE

LDF 3-AXLE

MAIN DIMENSIONS

TL	Total length	13.400 mm	RT	Swing clearance radius for truck	2.300 mm
EL	Extension length	1x 4.300 mm	RA	Clearance radius for trailer	1.650 mm
TE	Total length extended	17.700 mm	AD	Axle distance	1.360 mm
W	Width	2.550 mm	KA	Distance from kingpin to the 1st axle	9.540 mm
KH	Kingpin height	1.300 mm			
LH	Loading area height	900 mm			
DH	Lowered loading area height	490 mm			
FL	Fixed part behind goose neck	350 mm			
RL	Rear part of loading area length	3.160 mm			
DL	Lower loading area length	6.140 mm			
UL	Upper loading area length	4.100 mm			
FO	Front overhang	1.400 mm			
RO	Rear overhang	1.050 mm			

WEIGHT

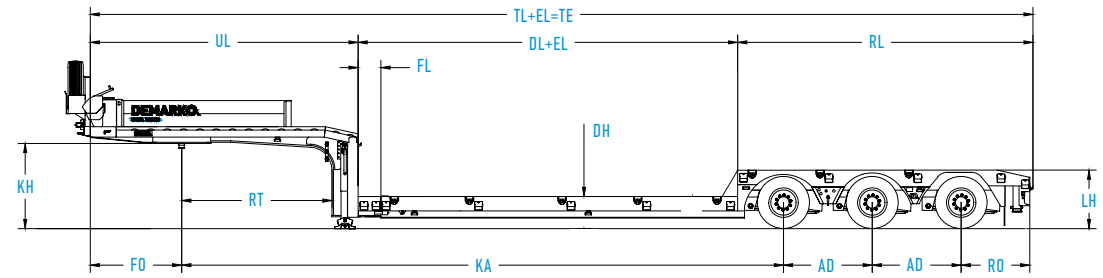
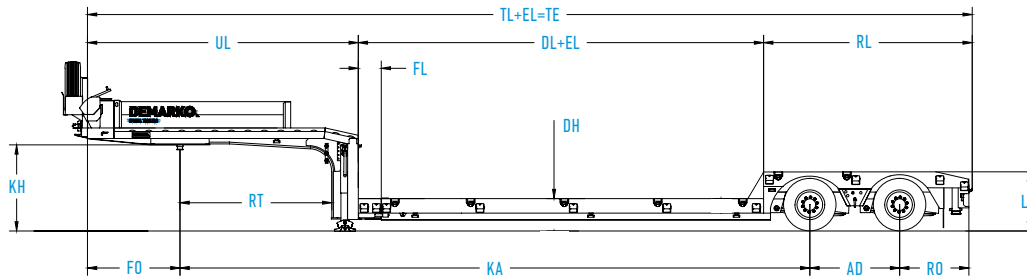
Max. fifth wheel load	18.000 kg
Axle load capacity	20.000 kg
Gross vehicle weight	38.000 kg
Dead weight	11.800 kg
Payload	26.200 kg

MAIN DIMENSIONS

TL	Total length	14.430 mm	RT	Swing clearance radius for truck	2.300 mm
EL	Extension length	1x 4.000 mm	RA	Clearance radius for trailer	1.650 mm
TE	Total length extended	18.430 mm	AD	Axle distance	1.360 mm
W	Width	2.550 mm	KA	Distance from kingpin to the 1st axle	9.210 mm
KH	Kingpin height	1.300 mm			
LH	Loading area height	900 mm			
DH	Lowered loading area height	490 mm			
FL	Fixed part behind goose neck	350 mm			
RL	Rear part of loading area length	4.520 mm			
DL	Lower loading area length	5.810 mm			
UL	Upper loading area length	4.100 mm			
FO	Front overhang	1.400 mm			
RO	Rear overhang	1.050 mm			

WEIGHT

Max. fifth wheel load	25.000 kg
Axle load capacity	30.000 kg
Gross vehicle weight	55.000 kg
Dead weight	12.500 kg
Payload	42.500 kg



- Heavy duty lashing rings in lower loading area, 5 pairs, LC=min. 5000 daN
- Heavy duty lashing rings in rear loading area, 3 pairs, LC=min. 5000 daN

- Goose neck with integrated lashing rail on sides
- Stake pockets, 8 pairs
- 1 fixed axle, 1 self-steering axle

- Heavy duty lashing rings in lower loading area, 5 pairs, LC=min. 5000 daN
- Heavy duty lashing rings in rear loading area, 4 pairs, LC=min. 5000 daN

- Goose neck with integrated lashing rail on sides
- Stake pockets, 9 pairs
- 2 fixed axles, 1 self-steering axle

LDF 4-AXLE

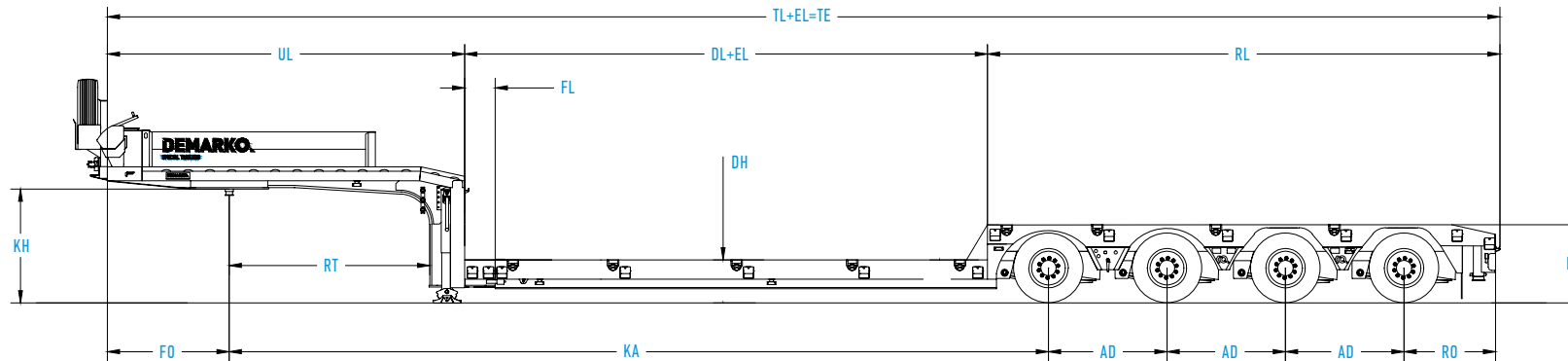
MAIN DIMENSIONS

TL	Total length	15.980 mm	UL	Upper loading area length	4.100 mm
EL	Extension length	1x 4.200 mm	FO	Front overhang	1.400 mm
TE	Total length extended	20.180 mm	RO	Rear overhang	1.050 mm
W	Width	2.550 mm	RT	Swing clearance radius for truck	2.300 mm
KH	Kingpin height	1.300 mm	RA	Clearance radius for trailer	1.650 mm
LH	Loading area height	900 mm	AD	Axle distance	1.360 mm
DH	Lowered loading area height	490 mm	KA	Distance from kingpin to the 1st axle	9.400 mm
FL	Fixed part behind goose neck	350 mm			
RL	Rear part of loading area length	5.880 mm			
DL	Lower loading area length	6.000 mm			

WEIGHT

Max. fifth wheel load	25.000 kg
Axle load capacity	40.000 kg
Gross vehicle weight	65.000 kg
Dead weight	13.500 kg
Payload	51.500 kg

- Heavy duty lashing rings in lower loading area, 5 pairs, LC=min. 5000 daN
- Heavy duty lashing rings in rear loading area, 5 pairs, LC=min. 5000 daN
- Goose neck with integrated lashing rail on sides
- Stake pockets, 10 pairs
- 2 fixed axles, 2 self-steering axles



LDF 5-AXLE

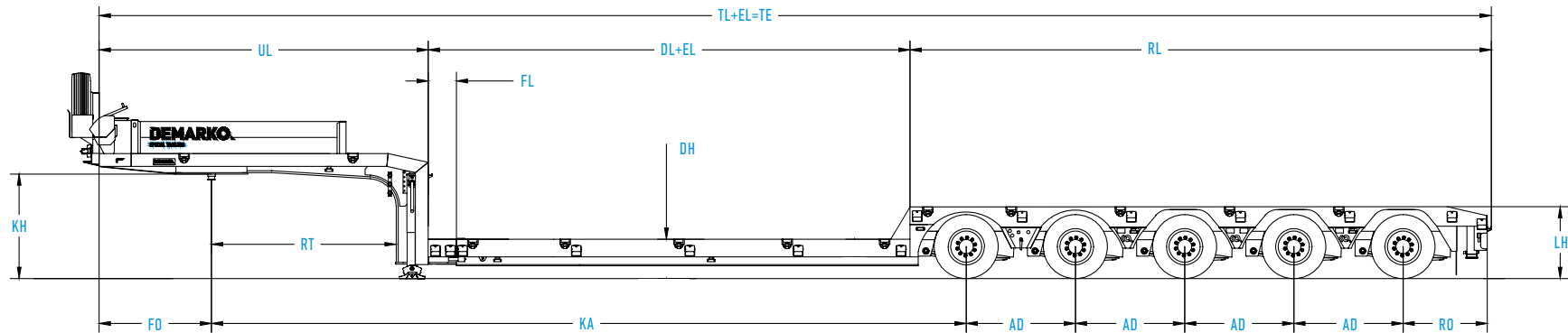
MAIN DIMENSIONS

TL	Total length	17.340 mm	UL	Upper loading area length	4.100 mm
EL	Extension length	1x 4.200 mm	FO	Front overhang	1.400 mm
TE	Total length extended	21.540 mm	RO	Rear overhang	1.050 mm
W	Width	2.550 mm	RT	Swing clearance radius for truck	2.300 mm
KH	Kingpin height	1.300 mm	RA	Clearance radius for trailer	1.650 mm
LH	Loading area height	900 mm	AD	Axle distance	1.360 mm
DH	Lowered loading area height	490 mm	KA	Distance from kingpin to the 1st axle	9.400 mm
FL	Fixed part behind goose neck	350 mm			
RL	Rear part of loading area length	7.240 mm			
DL	Lower loading area length	6.000 mm			

WEIGHT

Max. fifth wheel load	25.000 kg
Axle load capacity	50.000 kg
Gross vehicle weight	75.000 kg
Dead weight	14.500 kg
Payload	60.500 kg

- Heavy duty lashing rings in lower loading area, 5 pairs, LC=min. 5000 daN
- Heavy duty lashing rings in rear loading area, 6 pairs, LC=min. 5000 daN
- Heavy duty lashing rings on goose neck, 2 pairs, LC=min. 5000 daN
- Stake pockets, 11 pairs
- 2 fixed axles, 3 self-steering axles

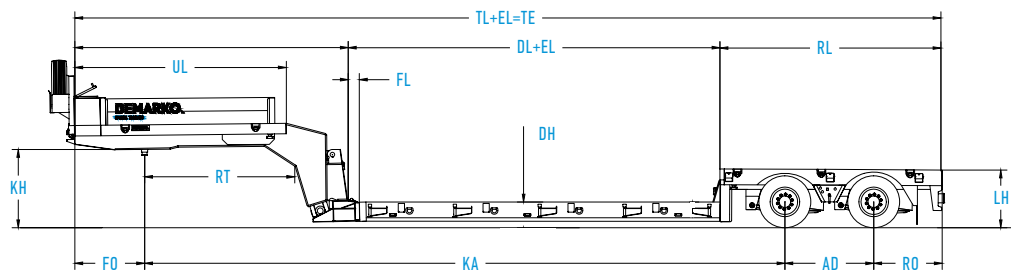


LDR 2-AXLE

MAIN DIMENSIONS

TL	Total length	13.270 mm	RT	Swing clearance radius for truck	2.300 mm
EL	Extension length	1x 5.150 mm	RA	Clearance radius for trailer	1.425 mm
TE	Total length extended	18.420 mm	AD	Axle distance	1.360 mm
W	Width	2.550 mm	KA	Distance from kingpin to the 1st axle	9.810 mm
KH	Kingpin height	1.200 mm			
LH	Loading area height	900 mm			
DH	Lowered loading area height	410 mm			
FL	Fixed part behind goose neck	170 mm			
RL	Rear part of loading area length	3.385 mm			
DL	Lower loading area length	5.695 mm			
UL	Upper loading area length	3.240 mm			
FO	Front overhang	1.070 mm			
RO	Rear overhang	1.050 mm			

WEIGHT	
Max. fifth wheel load	18.000 kg
Axle load capacity	20.000 kg
Gross vehicle weight	38.000 kg
Dead weight	12.300 kg
Payload	25.700 kg



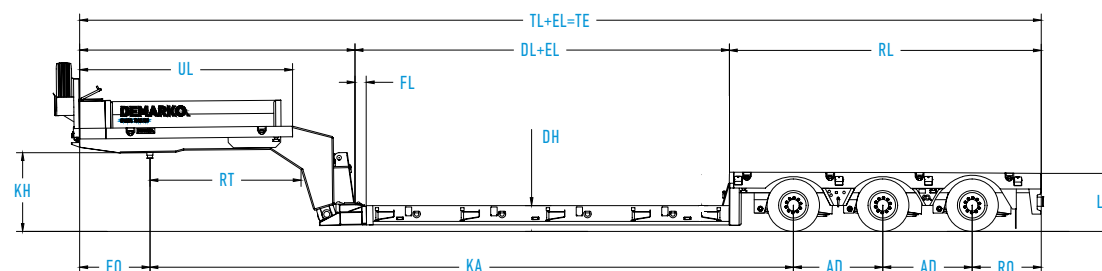
- Heavy duty lashing rings in lower loading area, 7 pairs, LC=min. 5000 daN
- Heavy duty lashing rings in rear loading area, 3 pairs, LC=min. 5000 daN
- Heavy duty lashing rings on goose neck, 2 pairs, LC=min. 5000 daN
- Stake pockets, 8 pairs
- 1 fixed axle, 1 self-steering axle

LDR 3-AXLE

MAIN DIMENSIONS

TL	Total length	14.630 mm	RT	Swing clearance radius for truck	2.300 mm
EL	Extension length	1x 5.150 mm	RA	Clearance radius for trailer	1.425 mm
TE	Total length extended	19.780 mm	AD	Axle distance	1.360 mm
W	Width	2.550 mm	KA	Distance from kingpin to the 1st axle	9.790 mm
KH	Kingpin height	1.200 mm			
LH	Loading area height	900 mm			
DH	Lowered loading area height	410 mm			
FL	Fixed part behind goose neck	170 mm			
RL	Rear part of loading area length	4.745 mm			
DL	Lower loading area length	5.695 mm			
UL	Upper loading area length	3.240 mm			
FO	Front overhang	1.070 mm			
RO	Rear overhang	1.050 mm			

WEIGHT	
Max. fifth wheel load	18.000 kg
Axle load capacity	30.000 kg
Gross vehicle weight	48.000 kg
Dead weight	13.200 kg
Payload	34.800 kg



- Heavy duty lashing rings in lower loading area, 7 pairs, LC=min. 5000 daN
- Heavy duty lashing rings in rear loading area, 4 pairs, LC=min. 5000 daN
- Heavy duty lashing rings on goose neck, 2 pairs, LC=min. 5000 daN
- Stake pockets, 9 pairs
- 2 fixed axles, 1 self-steering axle

LDR 4-AXLE

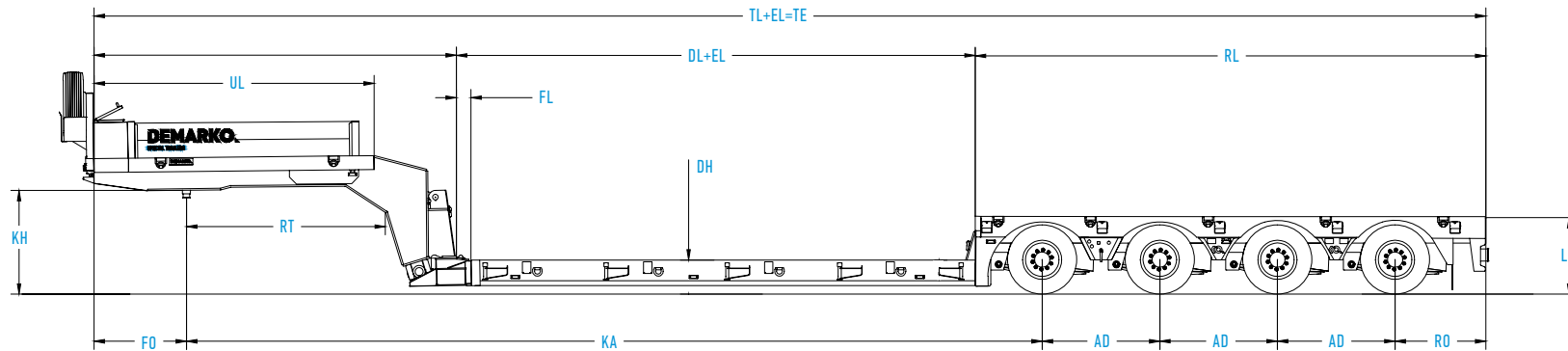
MAIN DIMENSIONS

TL	Total length	16.095 mm	UL	Upper loading area length	3.240 mm
EL	Extension length	1x 5.150 mm	FO	Front overhang	1.070 mm
TE	Total length extended	21.245 mm	RO	Rear overhang	1.050 mm
W	Width	2.550 mm	RT	Swing clearance radius for truck	2.300 mm
KH	Kingpin height	1.200 mm	RA	Clearance radius for trailer	1.425 mm
LH	Loading area height	900 mm	AD	Axle distance	1.360 mm
DH	Lowered loading area height	410 mm	KA	Distance from kingpin to the 1st axle	9.895 mm
FL	Fixed part behind goose neck	170 mm			
RL	Rear part of loading area length	5.905 mm			
DL	Lower loading area length	6.000 mm			

WEIGHT

Max. fifth wheel load	25.000 kg
Axle load capacity	40.000 kg
Gross vehicle weight	65.000 kg
Dead weight	14.200 kg
Payload	50.800 kg

- Heavy duty lashing rings in lower loading area, 7 pairs, LC=min. 5000 daN
- Heavy duty lashing rings in rear loading area, 5 pairs, LC=min. 5000 daN
- Heavy duty lashing rings on goose neck, 2 pairs, LC=min. 5000 daN
- Stake pockets, 10 pairs
- 2 fixed axles, 2 self-steering axles



LDR 5-AXLE

MAIN DIMENSIONS

TL	Total length	17.455 mm	UL	Upper loading area length	3.240 mm
EL	Extension length	1x 5.150 mm	FO	Front overhang	1.070 mm
TE	Total length extended	22.605 mm	RO	Rear overhang	1.050 mm
W	Width	2.550 mm	RT	Swing clearance radius for truck	2.300 mm
KH	Kingpin height	1.200 mm	RA	Clearance radius for trailer	1.425 mm
LH	Loading area height	900 mm	AD	Axle distance	1.360 mm
DH	Lowered loading area height	410 mm	KA	Distance from kingpin to the 1st axle	9.895 mm
FL	Fixed part behind goose neck	170 mm			
RL	Rear part of loading area length	7.265 mm			
DL	Lower loading area length	6.000 mm			

WEIGHT

Max. fifth wheel load	25.000 kg
Axle load capacity	50.000 kg
Gross vehicle weight	75.000 kg
Dead weight	15.200 kg
Payload	59.800 kg

- Heavy duty lashing rings in lower loading area, 7 pairs, LC=min. 5000 daN
- Heavy duty lashing rings in rear loading area, 6 pairs, LC=min. 5000 daN
- Heavy duty lashing rings on goose neck, 2 pairs, LC=min. 5000 daN
- Stake pockets, 11 pairs
- 2 fixed axles, 3 self-steering axles

